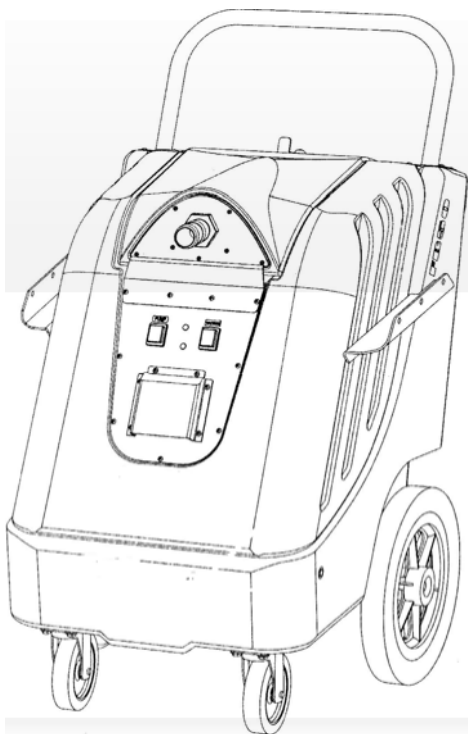


PROCHEM®

FLOOD BUSTER FB50



SAFETY, OPERATION AND MAINTENANCE INSTRUCTIONS.

Models: FB50

- CAUTION – READ THE INSTRUCTION MANUAL BEFORE USING THE APPLIANCE
- ORIGINAL INSTRUCTIONS
- MANUAL ALSO AVAILABLE ONLINE AT WWW.PROCHEM-UK.COM



MACHINE DATA

MODEL NO.	
SERIAL NO.	
DATE OF PURCHASE	
DISTRIBUTOR NAME	
DISTRIBUTOR TEL NO.	
MANUFACTURER CONTACT	Prochem Europe Ltd. Oakcroft Road, Chessington, Surrey KT9 1RH, UK Telephone: + 44 (0)20 8974 1515 Fax: + 44 (0)20 8974 1511 Email: sales@prochem.co.uk Website: www.prochem-uk.com

All information and specifications in this manual are current at the date of issue. However, because of Prochem Europe's policy of continual product improvement, we reserve the right to make changes at any time without notice. Please note that this manual applies to all models and explains variations including accessories used. Therefore, you may find some explanations for variations and options not installed on your equipment.

CONTENTS

	PAGE NO.
WARRANTY	5
WARNING SECTION	6
IMPORTANT SAFETY INSTRUCTIONS	7
GENERAL DESCRIPTION OF APPLIANCE & IMPORTANT OPERATING INSTRUCTIONS	8
GENERAL OPERATING INSTRUCTIONS	9
MAINTENANCE	11
MACHINE LAYOUT	12
INCLUDED ACCESSORIES & TOOLS	14
MACHINE OPERATION	15
TROUBLESHOOTING	18
WIRING DIAGRAM	19
PARTS DIAGRAM TANK	20
PARTS LIST TANK	21
PARTS DIAGRAM BASE	23
PARTS LIST BASE	24
PARTS DIAGRAM/LIST LID.	25
CE DECLARATION OF CONFORMITY	26



This product is marked according to the **European Directive (2002/96/EC) on Waste Electrical and Electronic Equipment (WEEE)**.

The symbol on this product indicates that this product must not be disposed of with normal household waste. Please protect human health and the environment by disposing of this product responsibly in the correct manner.

For further information regarding the disposal, treatment, recycling and recovery of this product, please contact:

Prochem Europe Sales Department
Telephone: +44 (0)20 8974 1515

Prochem Europe Ltd. EEE Producer Registration Number: WEE / AJ0044SY

European Directive (2011/65/EU) Restriction of use of certain Hazardous Substances in Electrical and Electronic Equipment (RoHS2).

This equipment does not contain more than the maximum permitted levels by weight of the following substances:

Lead (Pb), Mercury (Hg), Cadmium (Cd), Hexavalent Chromium (Cr (VI)), Polybrominated Biphenyls (PBB), Polybrominated Diphenyl Ethers (PBDE)



MACHINE WARRANTY

DATE EFFECTIVE: 1/7/15

As of the above date, this warranty supersedes all previous warranties and forms part of the contract of sale.

Prochem Europe Ltd. (hereafter referred to as "Prochem") guarantees this machine to be free from defects in materials and workmanship for the relevant time period as shown below, and from the actual date of purchase by the user. Proof of the purchase date from a Prochem Authorised Distributor will be required for performance of this warranty.

Rotationally moulded polyethylene tanks2 Years
All other parts except maintenance items (see below)1 Year

THIS WARRANTY EXCLUDES NORMAL MAINTENANCE ITEMS, including but not limited to HOSES, FILTERS, O-RINGS, DIAPHRAGMS, VALVES, DRIVE BELTS, GASKETS, CARBON BRUSHES and damage to motors and other components as a result of failure to replace normal maintenance items. **THIS LIST IS NOT EXHAUSTIVE.**

To obtain performance of this warranty, contact the Prochem Authorised Distributor who supplied the product.

The Prochem Authorised Distributor is responsible as the selling agent for the provision of initial training in the correct use and application of the machine and approved chemicals. The distributor is also responsible for service maintenance and repairs during and after the warranty period and the administration of any warranty claims in conjunction with the Prochem Service Department. Failure of any of these provisions and responsibilities may invalidate the warranty and the authorised status of the distributor.

If Prochem receives notice of any defects during the warranty period, Prochem reserves the right to either repair, or replace components that prove to be defective. Goods must be returned before the warranty is approved. Goods sent out prior to the return of faulty items will be invoiced at current prices, subject to standard payment terms (see Prochem Standard Terms and Conditions of Sale). Replacement parts supplied under warranty will be guaranteed for the remainder of the original machine warranty and **NOT** from the date of installation. Spare parts supplied after expiry of machine warranty may be covered by a manufacturer's warranty, subject to inspection by Prochem Europe Ltd. and at its sole discretion. Normal maintenance items, however, are not covered. Replacement or credit of any returned parts will be at the discretion of the Prochem Service Department. Any subsequent refusal to accept their decision will serve to invalidate this warranty with immediate effect.

PROCHEM AUTHORISED DISTRIBUTORS are responsible for machine and accessories service back up during and after the warranty period. Prochem will furnish parts if the warranty is approved, but **DISTRIBUTORS** will be responsible for fitting, service, labour and related charges including travel, if applicable, and the cost of returning the machine or parts to Prochem. If any chargeable work is undertaken by Prochem for **DISTRIBUTORS** the labour, parts (if applicable) and return carriage will be charged at **FULL LIST PRICE**. If warranty is approved due to genuine manufacturing defect, then labour charges and carriage charges may be waived at Prochem's discretion.

Prochem may send replacement parts to customers supplied by a **DISTRIBUTOR** or directly by Prochem, subject to the same conditions of replacement and payment above. The customer, however, will be responsible for fitting, labour and the carriage costs of returning repaired parts. Alternatively, Prochem will undertake warranty work at Chessington, subject to the same conditions, but the customer will be responsible for all carriage charges.

Any of the following circumstances involving the machine will serve to invalidate this warranty:-

NORMAL WEAR, ACCIDENTS, USE OF THE MACHINE FOR A PURPOSE OTHER THAN THAT FOR WHICH IT WAS INTENDED, INCORRECT MAINTENANCE, THE USE OF CHEMICALS OTHER THAN THOSE SUPPLIED OR APPROVED BY PROCHEM, INCORRECT INSUFFICIENT OR NON-USE OF DEFOAMER, EXPOSURE TO EXTREME TEMPERATURES OR CONDITIONS, INCORRECT INSTALLATION OR REPAIR & UNAUTHORISED INTERVENTION.

Liability is excluded for the following: -

All forms of damage and special damage founded in tort (apart from death and personal injury) and contract law including but not limited to consequential loss, loss of income and losses incurred in reliance of the contract; service, labour or third-party charges and the cost of returning the machine or defective parts to Prochem or Prochem's Authorised Distributor.

As against a person dealing as a consumer, this warranty creates specific rights in addition to any statutory rights, which are unaffected. As against a person dealing otherwise than as a consumer, however, this warranty excludes any implied term that the machine will correspond with a description or a product sample.

With the exception of some specific products which are labelled and intended to be used by a consumer, all equipment, machinery, accessories, products, services and advice supplied by Prochem is intended for professional and industrial

Your Prochem unit is designed to give you many years of reliable service. If a problem should arise during or after the warranty period, contact the Prochem Authorised Distributor or the Prochem Service Department, for details of the services available. Only the original purchaser of the new equipment may seek performance of this warranty – these rights cannot be transferred to a third party.

Prochem Europe Ltd.

Oakcroft Road, Chessington, Surrey KT9 1RH, ENGLAND

Telephone: + 44 (0)20 8974 1515 Fax: + 44 (0)20 8974 1511

Machine Warranty Issue 10 1/7/15

WARNINGS!

- **Warning!**
Machines shall not be used by children. Children should be supervised to ensure that they do not play with the appliance. This machine can be used by people with reduced physical, sensory or mental capabilities or lack of experience and knowledge if they have been given supervision or instruction concerning the use of the machine in a safe way and understand the hazards involved.
- **Caution:** this machine is for indoor use only.
- **Caution:** this machine shall be stored indoors only.
- **Warning!**
This machine must be disconnected from the mains during cleaning or maintenance, when replacing any parts or converting the machine to another function.
- **Caution:** under no circumstances should the machine be carried by or bumped up a flight of stairs using the handle, always empty the solution and waste tanks before storage or transporting the machine.

IMPORTANT SAFETY INSTRUCTIONS

**PLEASE READ THE FOLLOWING IMPORTANT SAFETY INSTRUCTIONS (!!)
BEFORE ATTEMPTING TO USE THIS MACHINE. FAILURE TO OBSERVE THE
INSTRUCTIONS MAY RESULT IN PERSONAL INJURY.**

!! CAUTION

Read the instruction manual before using the appliance.

!! SOUND PRESSURE LEVEL

The sound pressure of this machine, when in use, does not exceed 85 dB (A).

!! APPLIANCE SUITABILITY

This appliance is suitable for commercial use, for example, in hotels, schools, hospitals, factories, shops, offices and rental businesses.

!! FOR MAINS POWERED APPLIANCES during cleaning and maintenance – the plug is to be removed from the outlet socket.

!! TRAINING

You must be trained in the operation of this machine before use. Please read this manual carefully and obtain operating instruction from your Prochem Distributor or authorised representative in the correct use of this equipment and suitable chemicals before attempting to clean.

!! REPAIRS

Should any repairs, including supply cord replacement be required, we recommend that the appliance be returned to an authorised dealer.

!! ELECTRICAL CABLE INSPECTION & REPLACEMENT

This machine must be earthed while in use to protect the operator from electric shock. It is equipped with a sealed and approved EC three conductor cable and three-prong 13A plug. If the supply cord is damaged it must be replaced by a special cord or assembly available from the manufacturer or its service agent. During operation a hazard may occur when running the machine over the power supply cord. The power supply cord should be regularly inspected for signs of damage. If the power supply cord is damaged, it must be replaced.

!! RCD CIRCUIT BREAKER

In common with other household and commercial electrical equipment, an 'RCD' circuit breaker plug device is strongly recommended for this type of equipment.

!! EXTENSION CABLES

Avoid using extension cables with this machine. If an extension cable is used it should be of a suitable rating and no longer than 30 metres. Use only three wire CE approved extension cable with CE approved three-prong earthed plugs and three pole receptacles that accept the machine 13 amp plug.

!! DO NOT use a multiple adaptor socket to connect the machine and heating units or other devices to a single extension cable.

!! DO NOT stand the machine in water to operate such as during flood extraction.

SERIOUS INJURY OR DEATH MAY RESULT IF MACHINE IS IMMERSSED IN WATER!

!! DO NOT pull the machine by the power cable or hoses.

!! DO NOT use this machine with or near flammable vapours. These machines can ignite flammable vapours such as fuels, solvents or thinners.

!! DO NOT operate the machine unless it is completely assembled.

!! DO NOT attempt repairs or maintenance unless you are suitably qualified or experienced. Repairs and maintenance should only be performed by qualified personnel and the machine should be tested for electrical safety before re-use.

!! SPRAY LIQUID ejection could be hazardous as a result of its temperature, pressure or chemical content.

!! IF FOAM or liquid comes from the exhaust switch off immediately.

!! ALWAYS disconnect machine from mains supply when left unattended, when emptying the waste container or cleaning the appliance.

!! WHEN CLEANING THE WASTE TANK use a broad spectrum disinfectant cleaning agent to prevent contamination from any infectious material.

GENERAL DESCRIPTION OF APPLIANCE

The Flood Buster FB50 is designed to be a portable waste water extraction unit capable of sucking up liquids into a 35 Litre waste collection tank, this waste in turn can then be pumped out using the onboard waste pump to a waste water sewer.

IMPORTANT OPERATING INSTRUCTIONS

PLEASE READ THE FOLLOWING IMPORTANT OPERATING INSTRUCTIONS (!) BEFORE ATTEMPTING TO USE THIS MACHINE. FAILURE TO OBSERVE THE INSTRUCTIONS MAY RESULT IN DAMAGE TO THE EQUIPMENT.

! DO NOT expose the machine to rain or freezing temperatures. Drain solution system and store indoors when not in use.

! DO NOT operate the machine without waste tank filters.

! DO NOT extract boiling water or temperature in excess of 76°C.

! DO NOT use the machine for dry vacuuming. The vacuum must only be used for wet extraction.

! AFTER USE rinse the waste tank with clean water and remove loose fibres from the vacuum filter.

! ALWAYS use defoamer in the waste tank to control foaming from previous shampoo residues in the carpet.

! USE ONLY genuine replacement parts for this machine, supplied by an authorised Prochem Distributor.

! DO NOT use this machine for any purpose other than for its intended design function. Any deviation from its proper use or purpose and any consequential **damage** that may occur is the sole responsibility of the user.

! ALWAYS discharge soiled solution to a sewage drain linked to a sewage treatment facility.

! DO NOT discharge soiled solution into roadside storm drains.

! DO NOT use the drain valve to lift the machine which may result in damage to the drain valve or leakage from the drain valve mounting.

GENERAL OPERATING INSTRUCTIONS

UNPACKING YOUR NEW FB50:

When your package is delivered, check the packaging carefully for signs of rough handling. If your FB50 is damaged, notify the carrier immediately and request an inspection. Be sure to keep the box, packing inserts, packing lists and carrier's receipt until the inspector has verified your claim. PROCHEM'S liability ceases when the carrier picks up the shipment. However, our customer service staff will be happy to furnish any information needed in connection with the claim and will attempt to expedite a resolution.

PLEASE READ BEFORE OPERATING YOUR NEW FB50:

Read the manual carefully and completely before attempting to operate the unit. This manual has important information for the use and safe operation of the machine. Keep this manual handy at all times.

This equipment has been engineered and manufactured to provide excellent performance and service. To ensure that your equipment will continue to perform as intended:

Maintain equipment regularly- following the suggested maintenance schedule provided.

Use only original PROCHEM parts.

Operate equipment with care.

If additional information is needed, please contact:

Your PROCHEM Distributor in the first instance or PROCHEM 0208 974 1515

All information and specifications printed in the manual are current at the time of printing; however, because of PROCHEM'S policy of continual product development, we reserve the right to make changes at any time without notice.

FAILURE TO OBSERVE THESE INSTRUCTIONS MAY SERIOUSLY AFFECT THE PERFORMANCE OF THE MACHINE AND INVALIDATE THE WARRANTY

- Connection instructions - The 220 - 240V AC models have been fitted with the appropriate EC type sealed power cable and 3 prong 13 amp plug for the UK market. Ensure the machine is connected to a 13-amp socket outlet having the same configuration as the plug. No adapter should be used with this machine. Any modification to the plug type may be dangerous and will void the warranty.
- This equipment is intended for commercial use only.
- The machine is designed for liquid and flood extraction purposes.
- Disconnect the power cord from outlet before servicing. Do not leave machine connected to an electrical outlet when unattended.
- Do not immerse or use this machine in standing water. Such use may cause electric shock.
- This equipment is not designed to handle or use combustible/volatile substances such as gasoline or kerosene, in, on, or near the machine. The use of such materials will cause an extreme hazardous condition.
- All repairs must be carried out by an authorised Prochem distributor.
- Repairs should only be carried out by a qualified person.
- Do not use replacement parts other than genuine manufacturer's parts as specified in the parts list.
- Do not use chemicals in the machine other than those supplied or approved by Prochem Europe limited.
- Do not use the machine as a 'dry' vacuum.
- Keep the solution tank and filter clean.
- Clean the waste tank and debris filter daily.
- Clean the drain hose regularly.
- ◁ After use, flush through the pump and waste tank with at least two gallons of hot water.
- Do not allow the machine, hoses or tools to freeze. Freezing may seriously damage the pump and fittings, store indoors when not in use. When in transit during freezing weather, insulate and cover machine, wand and hoses. To prevent hose cuffs splitting in cold conditions, immerse them in warm water before use.

MAINTENANCE

This FB50 has been engineered and built to require minimum maintenance. But like any machine, it does require some care to keep it in optimum working condition. Careful attention to these maintenance instructions will give you maximum operating performance and life expectancy of the machine.

CAUTION: Disconnect the power cord from the outlet before carrying out any cleaning or maintenance on the machine.

1. Keep the machine clean.
2. After every job wipe down the surface of the machine with a clean damp cloth.
3. Inspect the power cord for damage.

DO NOT USE THE MACHINE WITH A DAMAGED POWER CORD.

PERIODIC MAINTENANCE

DAILY:

Check and clean vacuum filter.

Rinse and disinfect the waste tank.

Pump waste tank rinse water from machine to clean waste pump.

WEEKLY:

Check for obstructions in vacuum pathways

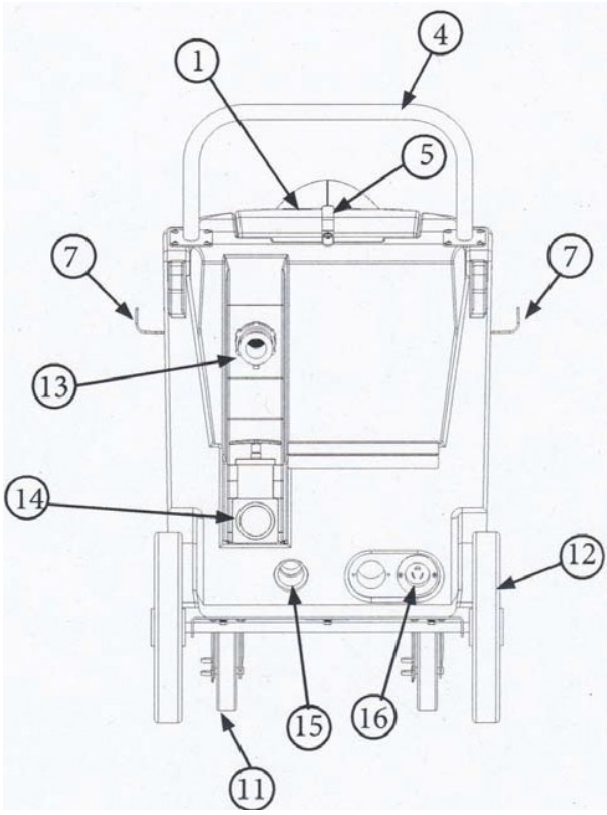
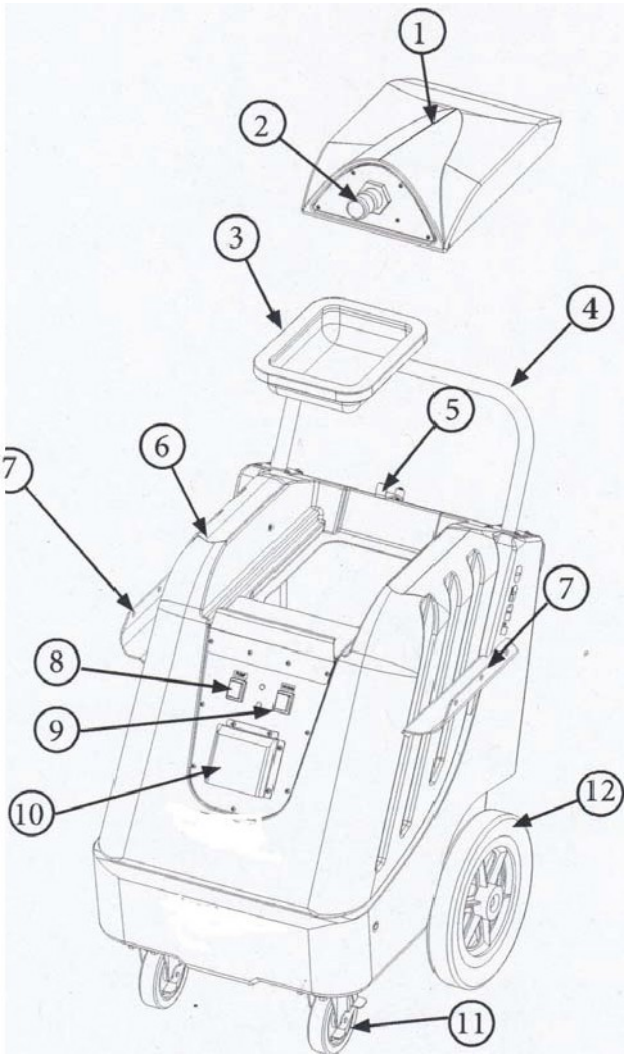
QUARTERLY:

Check plumbing and fittings for leaks
Check power cords and hoses for tears.

CORD STORAGE:

While not in use the cord can be removed, coiled and stored with the machine accessories.

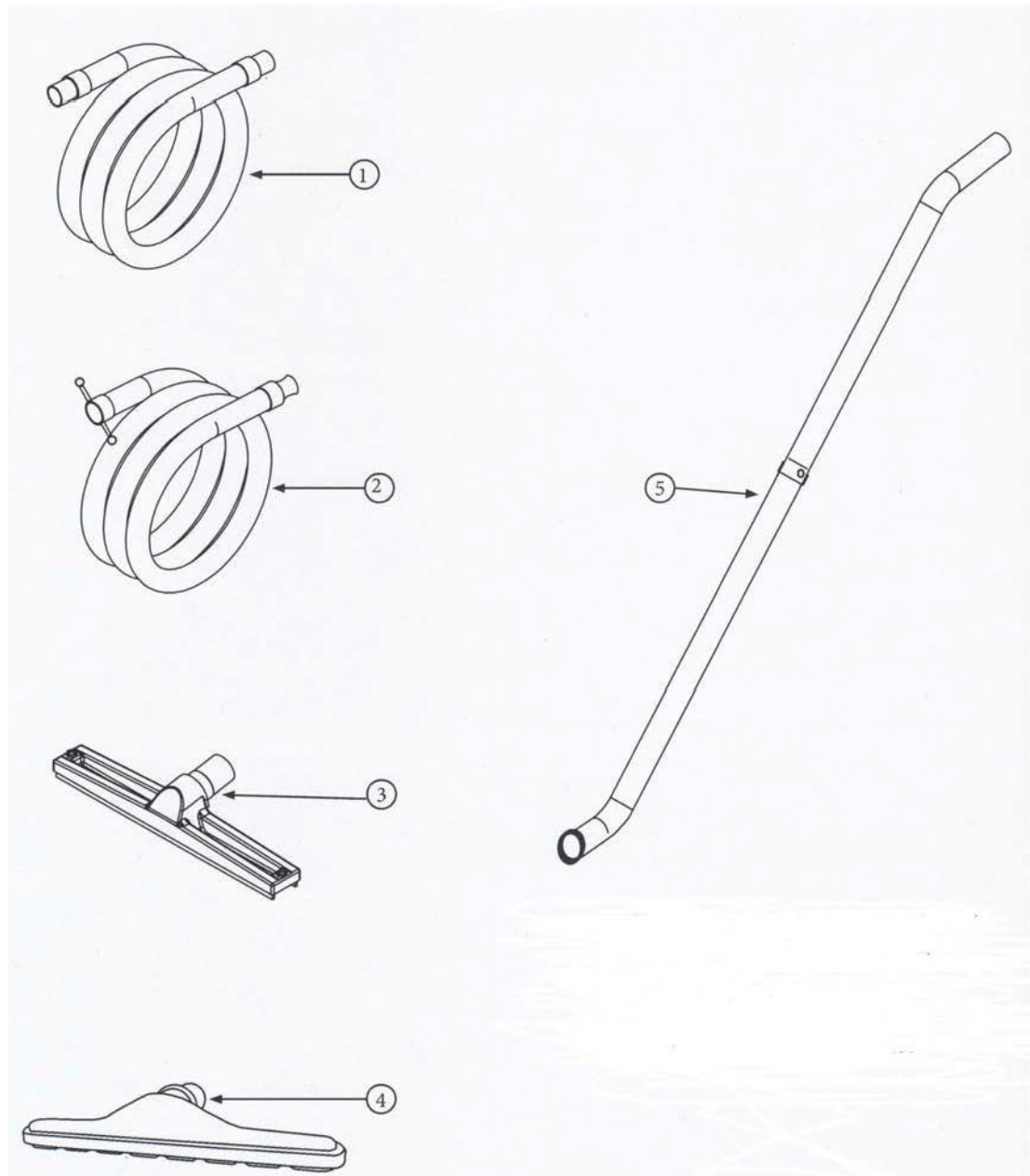
MACHINE LAYOUT



MACHINE LAYOUT

1. **TANK LID:** this provides the seal for the vacuum system when closed and allows access to the tank and debris basket when removed.
2. **VACUUM INTAKE BARB:** This allows the vacuum hose to be attached to the recovery tank securely to make the transfer of fluid easily and safely.
3. **DEBRIS BASKET WITH GASKET:** this filters out the larger solid objects from the incoming fluid stream, while the gasket creates the airtight seal between the tank and the lid.
4. **HANDLE:** this is used to maneuver the equipment into position.
5. **LID LOCKING CATCH:** Used to lock or release the tank lid.
6. **TANK:** this houses the pump and acts as the collection point for the waste liquid prior to being pumped away.
7. **HOSE SUPPORT:** This supports the hose when the hose is wrapped around the body of the machine for moving and storage.
8. **PUMP SWITCH:** This controls the power to the pump.
9. **VACUUM SWITCH:** This controls the power to the vacuum motor.
10. **COLD AIR INTAKE:** This allows cool air into the body of the machine to aid cooling the vacuum motor.
11. **FRONT LOCKING CASTORS:** These can be locked to prevent unwanted movement of the machine.
12. **REAR WHEELS.**
13. **DISCHARGE HOSE HOOK UP:** This provides the connection for the auto discharge hose.
14. **WASTE LIQUID DISCHARGE VALVE:** This allows for the manual draining of the recovery tank.
15. **VACUUM EXHAUST PORT.**
16. **TWIST LOCK POWER SOCKET:** This allows for the connection of the detachable power cord.

INCLUDED ACCESSORIES AND TOOLS



1. VACUUM HOSE
2. DISCHARGE HOSE
3. SQUEEGEE HEAD
4. SCALLOP TOOL
5. TWO PIECE WAND

MACHINE OPERATION

PUTTING INTO SERVICE.

Ensure all switches are in the off position.

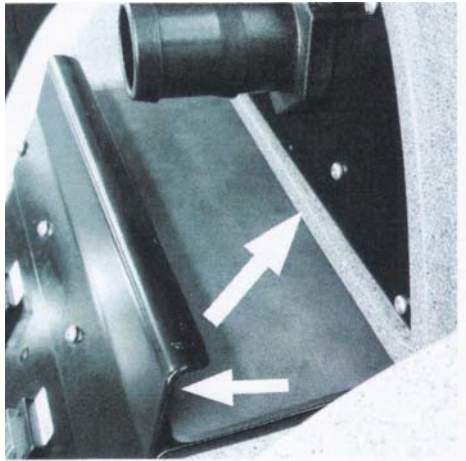
Position the machine on a dry place away from the flooded area. Lock in the castors so that the machine does not change position during operation.

Connect the discharge hose to the discharge hose hook up on the machine.

Position the end of the discharge into a safe discharge location. **Check local laws and regulations concerning waste liquid disposal.**

Make sure the debris basket with gasket is in place before you position the lid on the tank. Without the debris basket in position the vacuum motor will not create suction.

Make sure to tuck the lip of the lid under the metal bracket.



Turn the lid locking catch to the closed position.



Check the drain valve to make sure it is in the fully closed position.

Connect the vacuum hose to the vacuum intake barb.

OPERATION OF THE MACHINE.

Turn on both the vacuum and pump switches. The vacuum motor will operate immediately and begin drawing liquid into the waste tank. The pump will not start discharging liquid until it has reached a predetermined level and activated the float switch.

For deep flooding you may submerge the end of the vacuum hose directly into the liquid. Continue extracting until the liquid level is low enough to use the appropriate hard floor or carpet tool.

For hard floors connect the squeegee head to the wand and vacuum hose for carpets attach the scallop tool to the wand instead in each case use the wand and tool to recover as much liquid as possible.

Continue the operation until the task is complete.

NOTE: During operation, its normal for the vacuum and the pump to stop and start automatically as the control float switches regulate the fluid level in the tank.

AFTER OPERATION.

Remove the vacuum hose and run the vacuum motor for at least 3 minutes with only air moving through the system. This will allow all moisture to be removed from the vacuum system. Failure to carry this out may cause damage to the vacuum motor.

Rinse the tank with clean water and disinfectant mix allowing the pump to operate and discharge through the discharge hose.

Turn off the switches and remove the power cord from the machine power inlet and also from the wall power outlet.

Dump any remaining liquid in the tank after the operation is concluded and rinse with clean water.

Drain the tank completely.

Remove the waste dump hose from the machine.

STORAGE AND TRANSPORTATION.

The machine can be prepared for storage (indoors only), by ensuring the power cord is coiled and secured using the Velcro strap provided.

The waste tank is empty and clean.

The drain valve fitted to the waste tank is securely closed.

Transporting the machine to another site in a vehicle can be carried out if the previous conditions are met but the machine must be securely stowed.

If the machine is to be lifted into a vehicle two lifting points are supplied one being the handle recess on the front of the machine and the other the handle recess on the back of the machine.

Due to the weight of the machine it may require two people to lift it into any vehicle, or to carry it upstairs.

Caution, under no circumstances should the machine be bumped up a flight of stairs using the handle, always empty the waste tank before storage or transporting the machine.

USE OF PERSONAL PROTECTIVE EQUIPMENT (PPE)

Operation of this machine requires the use of protective latex gloves the task to be carried out may require other PPE to be highlighted in the tasks Risk assessment and method statement. Please be aware that any chemicals may require specific PPE to be worn. This can be found on the Material Safety Data Sheet (MSDS) for that particular product.

TROUBLE SHOOTING

There are no user serviceable parts on the machine. Any inspection or service should be carried out by a qualified technician at an approved dealer.

THE PUMP DOES NOT DISCHARGE LIQUID.

The machine is not plugged in.
The switch is not in the on position.
The switch is faulty. **Service is required.**
The float has accumulated debris on it.
The float or float rod is obstructed.

THE PUMP DOES NOT TURN OFF.

The pump is air locked. Turn off the switch for a minute and turn it back on again. Repeat this procedure until the air is removed.
The float or float rod has an obstruction.
Impeller inlet plugged. **Service is required.**

WEAK SUCTION.

The lid is not completely closed
The debris basket is missing or incorrectly installed.
The drain valve is open.
The wand is blocked.
The vacuum hose has leaks.
Faulty vacuum motor. **Service is required.**

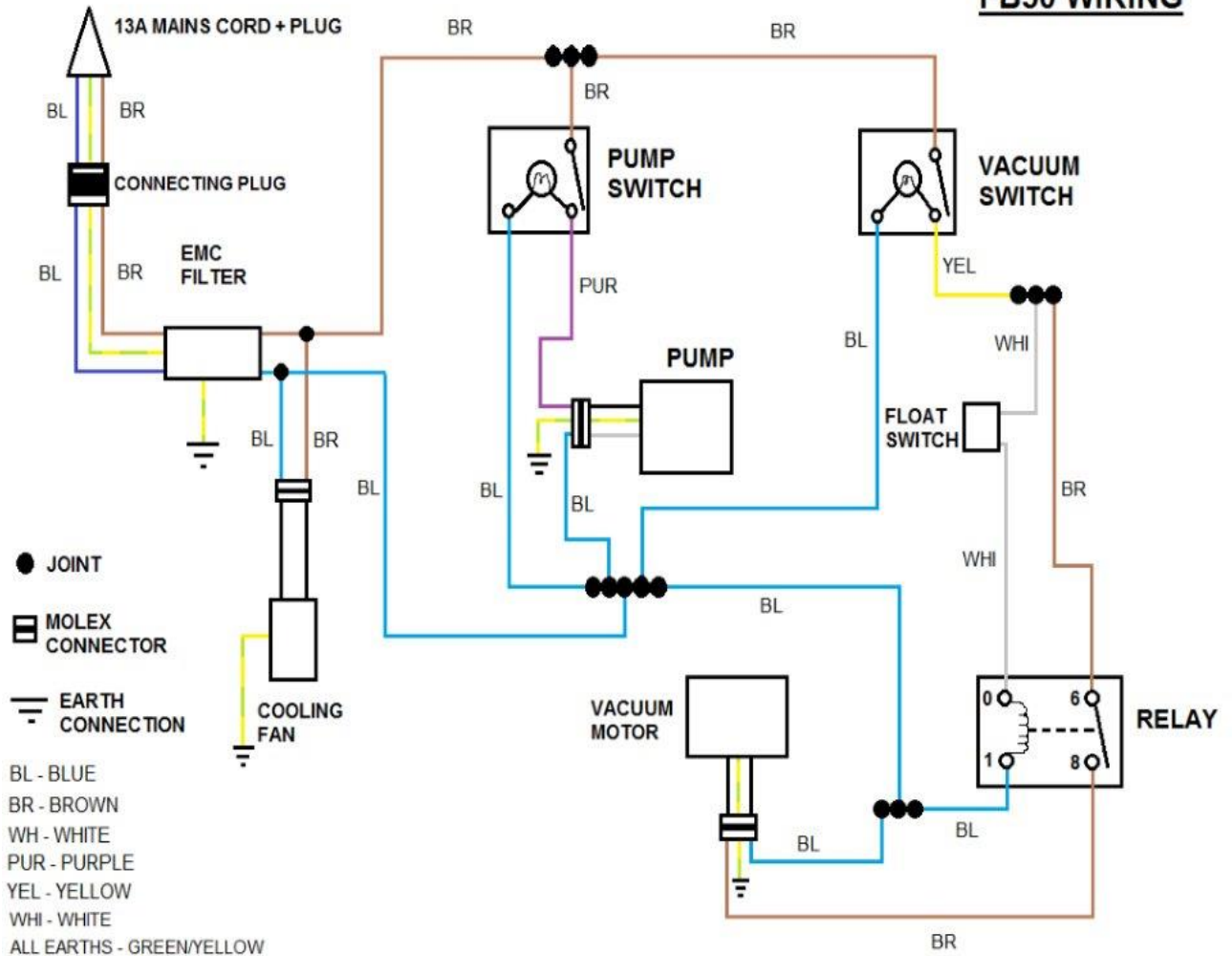
VACUUM MOTOR DOES NOT TURN ON.

The machine is not plugged in.
The vacuum motor switch is not in the on position.
The switch is faulty. **Service is required.**
The vacuum float switch is stuck in the up position.
Connection of the relay is faulty. **Service is required.**

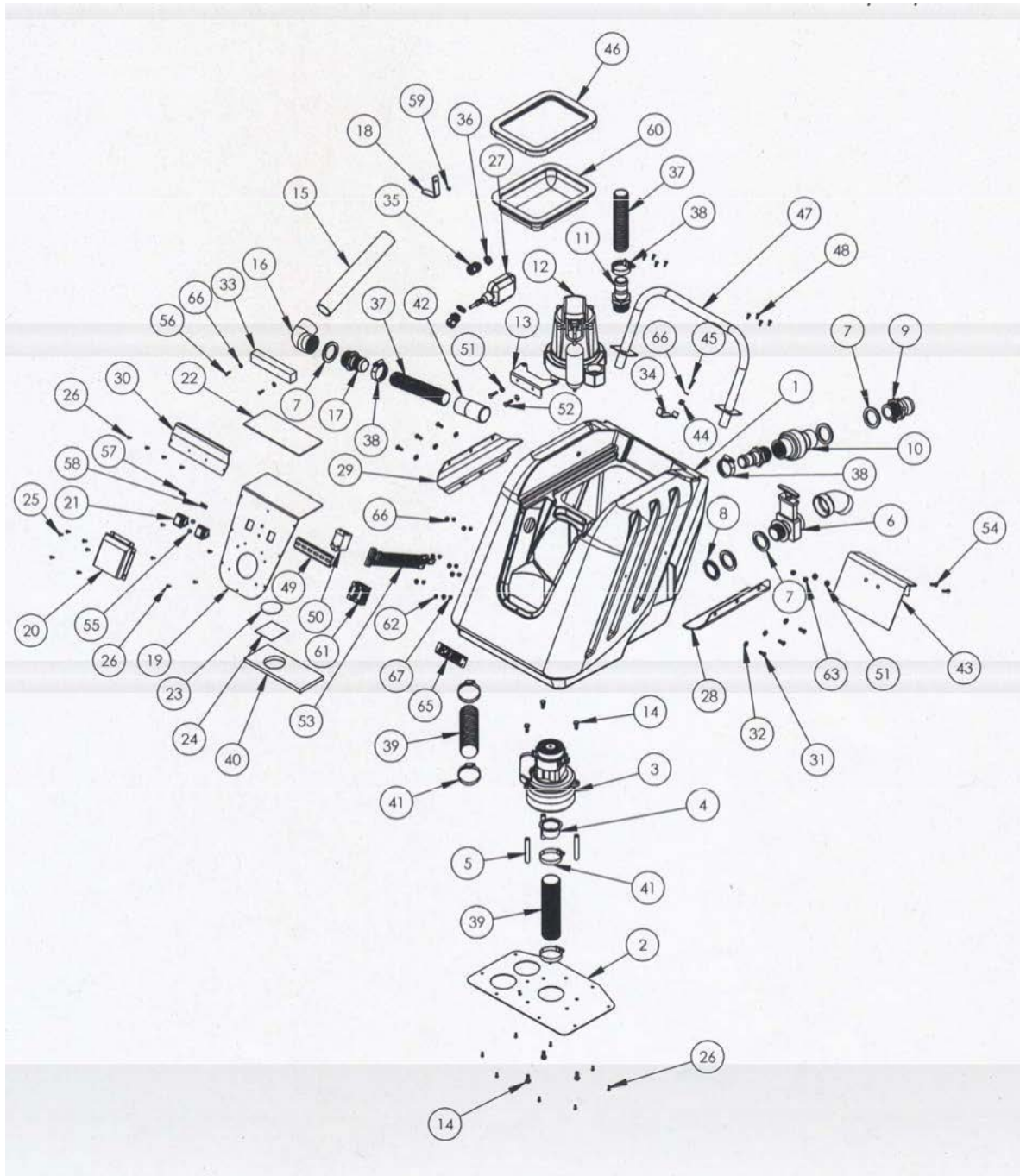
VACUUM MOTOR DOES NOT TURN OFF.

The vacuum float switch is stuck in the low position.
The relay contact is stuck shut. **Service is required.**

FB50 WIRING



PARTS DIAGRAM TANK

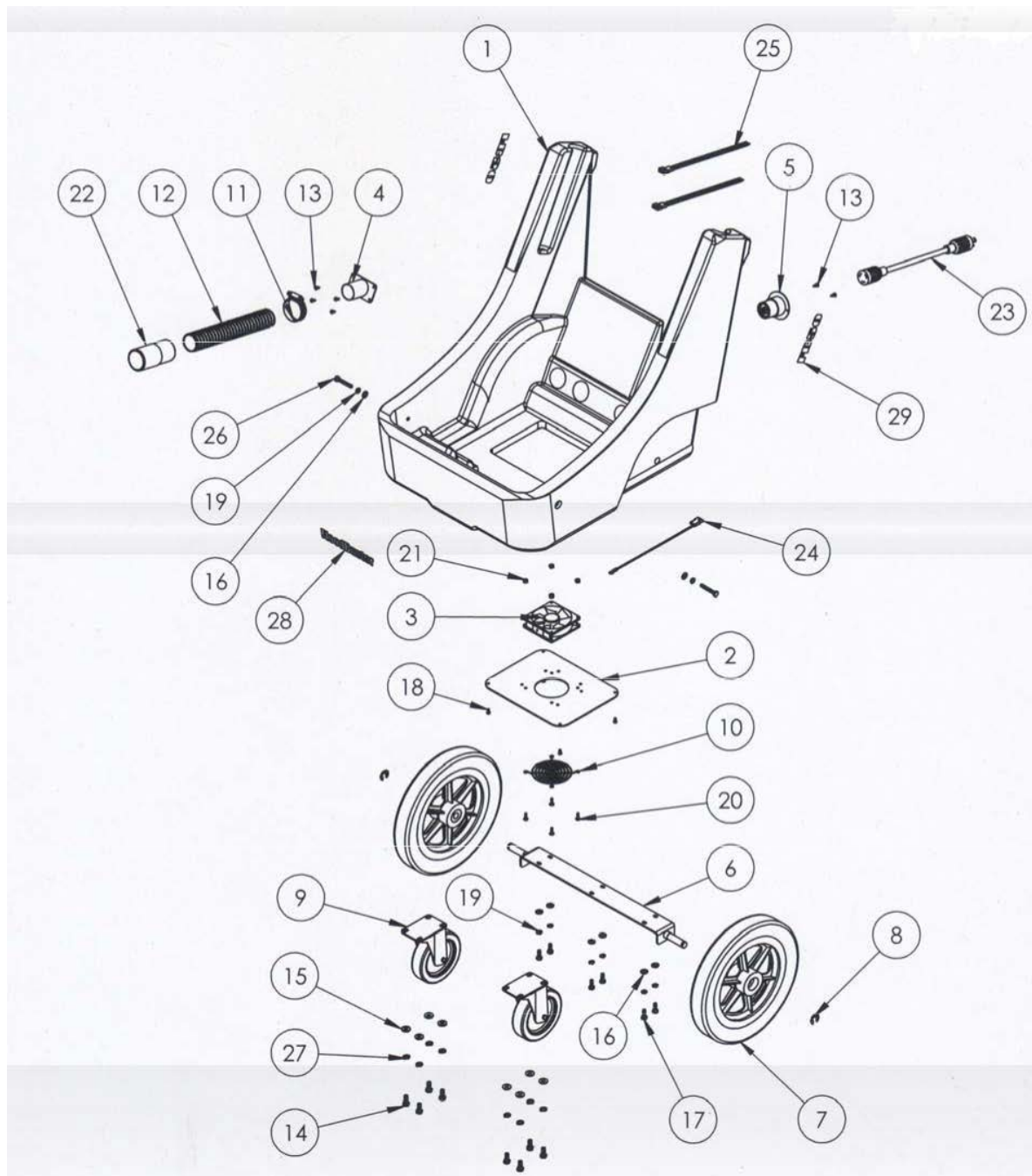


PARTS LIST TANK

Item No	Part Number	Stock Code	Description	Qty
1	F13809		TANK	1
2	D13614		VACUUM PLATE	1
3	G13554	LA4501E	VACUUM MOTOR	1
4	D00424	DA00424	EXTENSION TUBE	1
5	D13855		ALLUMINIUM SPACER	3
6	K00711	EN00711	DRAIN VALVE	1
7	E11128		DRAIN VALVE GASKET	5
8	C00271	E00271	1½" JAM NUT	1
9	K13925		DISCHARGE FITTING	1
10	A13893		CHECK VALVE 1 ½" FPT	1
11	K13920		1½" HOSE BARB	2
12			PUMP 50GPM	1
13	D13891		PUMP BRACKET	1
14	C13844		5/16"-18 X ¾" HEX BOLT, SS	6
15	K00672		1½" PIPE	1
16	K00666	EN00666	1½" 90 DEGREE ELBOW	1
17	K00665-1	E00665-1	1½" HOSE ADAPTER	1
18	D14302		L - BRACKET	1
19	D13609		SWITCH PANEL REV 4	1
20	D13877		VENT COVER	1
21	B02211-1	E02211-1	ROCKER SWITCH	2
22	E13982		SWITCH PLATE PAD	1
23	F13983		SWITCH PLATE PLUG	1
24	F13984		SWITCH PANEL PLUG BASE	1
25	C00310-12		#8-32X ½" SCREW, BLACK OXIDE	6
26	C11236		#8-32 X ½" SCREW, SS	17
27	B13269		FLOAT SWITCH.	1
28	D13943		SIDE RAIL, RIGHT.	1
29	D13942		SIDE RAIL, LEFT.	1
30	D14034		LID HOLDER.	1
31	C11167	E11167	¼ - 20 X ¾" SCREW, SS.	6
32	C00233-1		¼" id FLAT WASHER, SS.	6
33	E13951		GASKET, FRONT TANK.	1
34	D13948		LID LATCH.	1
35	B11821		STRAIN RELIEF.	2
36	B11832		STRAIN RELIEF NUT.	2
37	J00618-1	E00618-1	1 ½" WIRE REINFORCED HOSE.	2
38	J00650		SCREW CLAMP #24 1.25 Inch.	3
39	J00618	E00618	2" ID HOSE	2
40	E13949		GASKET, SWITCH PANEL.	1
41	J00639		2" ID HOSE CLAMP.	4
42	J10744	PF4011	1 ¾" SLIP-ON CUFF GREY.	1
43	D13973		DRIP GUARD.	1
44	C14049		SPRING, ½" ID X ½" L.	1
45	C11491		#10-32 X 1" SCREW, SS	1
45	E13900		GASKET, INTAKE BASKET.	1
47	D13887		U-HANDLE.	1
48	C02290		#10-32 X ½" SCREW, SS.	8
49	B13851		DIN RAIL.	1
50	B13848		RELAY.	1
51	C00238		¼" ID SEALING WASHER.	4
52	C13028		¼"-20 X 1" HEX BOLT, SS.	2

53	B13956		WIRING HARNESS.	1
54	C14053		1/4" – 20 X 1" SCREW, FH, SS.	2
55	K13905		5/16" NYLON PLUG.	2
56	C00295-1	E00295-1	#10 X 3/4" SHEET METAL SCREW, SS.	2
57	H02574		PUMP SWITCH LABEL.	1
58	H02576		VACUUM SWITCH LABEL.	1
59	C02268		#10 – 32 X 3/8" SCREW, FLAT HEAD, SS.	1
60	K13898		INTAKE BASKET.	1
61	B13738		MOUNTING CARRIER LEVER.	2
62	C00256		LOCKWASHER, #10, EXT STAR.	1
63	C14055		LOCKNUT, 1/4 - 20, NYLON, BRASS.	2
64	K00710		ELBOW DRAIN VALVE.	1
65	C11955		WASHER, #10.	11
66	C13120		#8–32 HEX NUT W/LOCK WASHER.	8
67				

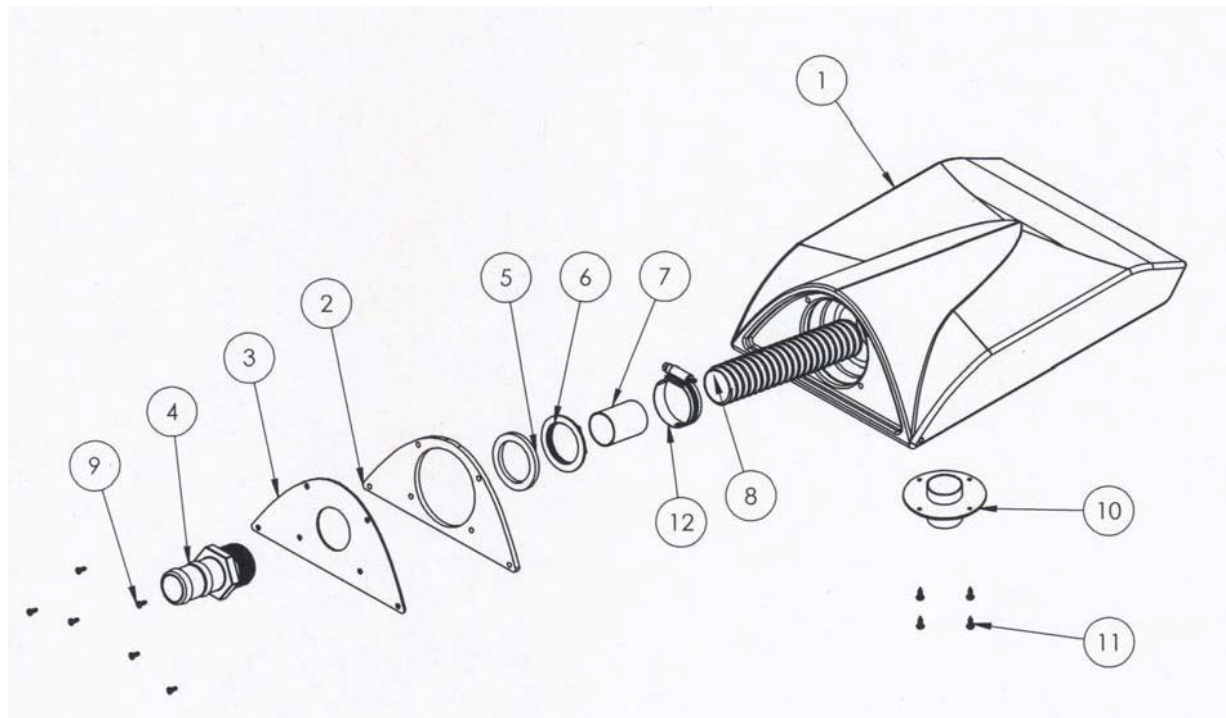
PARTS DIAGRAM BASE



PARTS LIST BASE

Item No	Part Number	Stock Code	Description	Qty
1	F13808		BASE.	1
2	D13890		BASE BOTTOM PLATE.	1
3	B13280		COOLING FAN.	1
4	D13884		EXHAUST FLANGE REV 04.	1
5	B13278		POWER INLET.	1
6	D13888		AXLE.	1
7	G13248	E13248	WHEEL 12 INCH.	2
8	C13861		E RING	2
9	G13897		CASTOR, SWIVEL, 5".	2
10	D13281		FAN GUARD 92MM.	1
11	J00650		SCREW CLAMP #24 1.25 INCH.	1
12	J00618-1		HOSE 1.5 INCH.	1
13	C00293	E00293	#8-32 X 1/2" PAN HEAD SCREW.	6
14	C13844		1/4"-20 X 3/4" HEX BOLT, SS.	8
15	C00233	JE00233	1/4" ID FLAT WASHER USS SAE.	8
16	C00233-1		1/4" ID FLAT WASHER, SS.	8
17	C00313		1/4" - 20 X 3/4" HEX BOLT.	6
18	C00311	E00311	#8-32 X 3/8" SCREW.	4
19	C00254	JE00254	1/4" SPLIT LOCK WASHER	8
20	C10737	E10737	#8-32 X 5/8" TRUSS HEAD SCREW, SS.	4
21	C02320	E02320	#8-32 NYLON LOCKNUT STAINLESS.	4
22	J10744		1 3/4" SLIP- ON CUFF GREY.	1
23	B13131		EXTENSION CORD 12/3 SJTW.	1
24	-		COOLING FAN WIRING HARNESS	1
	B02177		MOLEX, 3-C MALE.	1
	B02178		MOLEX PIN, FEMALE.	3
	B00185-61		GROUND WIRE, 16GA	1
	B00180-10-3		RING TERMINAL, #10 CENTRE.	1
25	B13899		WIRING HARNESS.	1
26	C02322	E02322	HEX BOLT, 1/4" -20 X 1 3/4".	2
27	C00251		SPLIT LOCK WASHER, 5/16".	8
28	H13672		LABEL, FLOODBUSTER.	1
29	H13673		LABEL, FB50.	2
	B00190		NYLON TIE, 4 ".	2
	H02548-2		LABEL WARNING, POWER CORD.	1
	B12915	E11177	CABLE TIE, VELCRO.	1

PARTS DIAGRAM/LIST LID



ITEM NO	PART NUMBER	STOCK CODE	DESCRIPTION	QTY
1	F13810		LID.	1
2	E13904		INTAKE PANEL GASKET.	1
3	D13608		INTAKE PANEL.	1
4	K13920		1 1/2" HOSE BARB.	1
5	E11128		DRAIN VALVE GASKET	1
6	C00271	E00271	1 1/2" JAM NUT.	1
7	D14054		1 1/2" ID EXTENSION TUBE.	1
8	J00618-1	E00618-1	1 1/2" WIRE REINFORCED HOSE.	1
9	C00324-38	E00324-38	#6-32 X 3/8" SCREW RH.	6
10	D14019		AIR GUIDE FLANGE.	1
11	C00293	E00293	#8-32 X 1/2" PAN HEAD SCREW	4
12	J00650		SCREW CLAMP #24 1.25 INCH.	1

DECLARATION OF CONFORMITY

We:
Prochem Europe Ltd.,
Oakcroft Road,
Chessington,
Surrey, KT9 1RH
UK
(Importer / EC Responsible Person)

E.D.I.C
1753, Blake Avenue,
Los Angeles,
California, 90031-1006
USA
(Manufacturer)

Declare that the product(s):

Type(s): **FLOODBUSTER**
Model(s): **FB50**
Description: **WATER SUCTION APPLIANCE 220-240V**

Have been manufactured in conformity with the following standards and specifications:

BS EN 60335-1
BS EN 60335-2-2
EN 55014-1
EN 55014-2
BS EN 61000-3-2
BS EN 61000-3-3
BS EN 50366

And comply with the requirements of (as amended):

2006/95/EC	Low Voltage (LVD) Directive
2004/108/EC	Electromagnetic Compatibility (EMC) Directive

A Technical file is held by Prochem Europe Ltd.

Certificate of compliance and test reports have been issued by:

Signed
(For and on behalf of the Importer / EC Responsible Person)



Name: J Hattersley
Position: Equipment Product Manager
Place of Issue: Chessington UK
Date of Issue: